



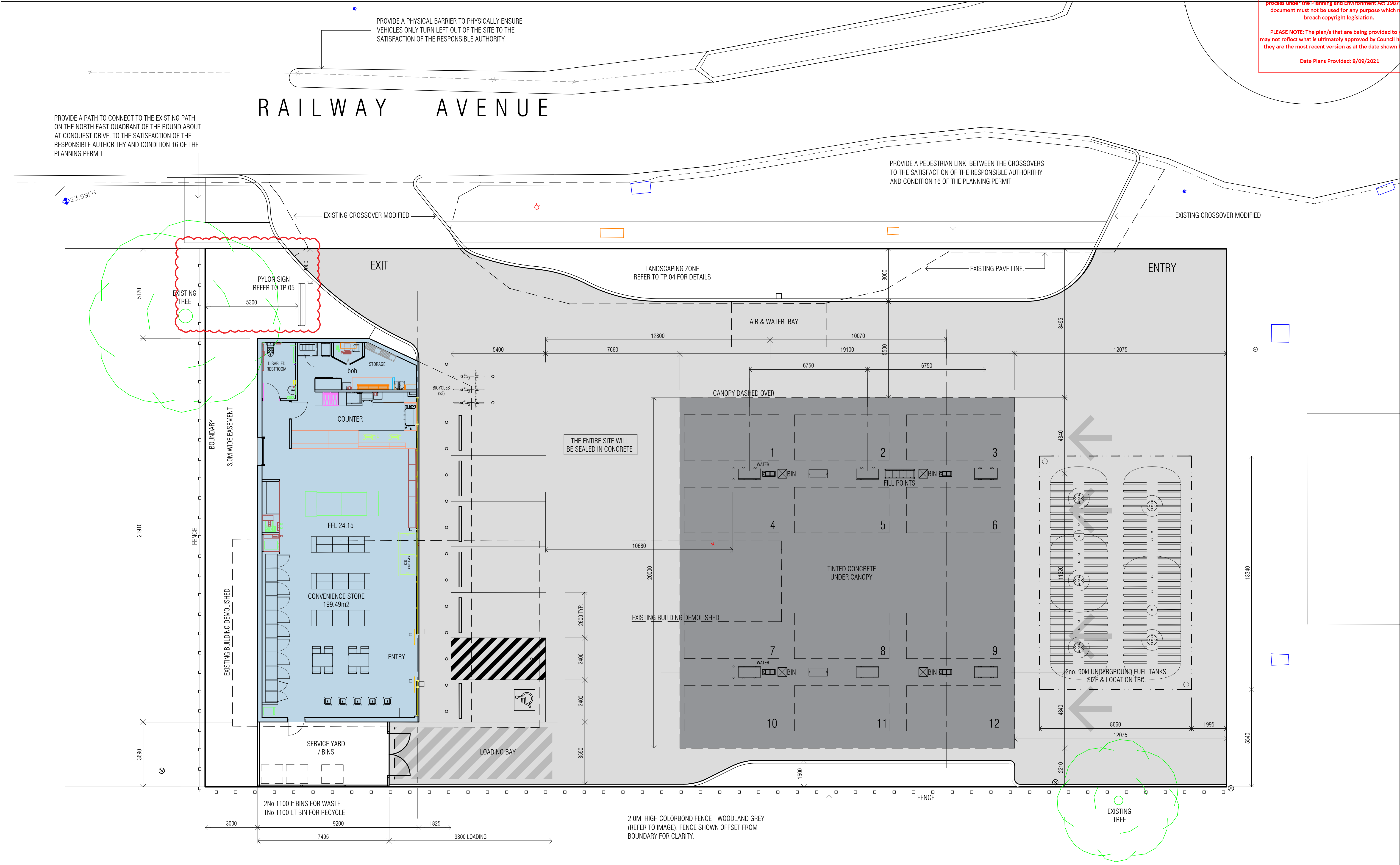
DEVELOPMENT SUMMARY	
DESCRIPTION	AREA (m2)
SITE	1789.00
CONVENIENCE STORE	199.49
SERVICE YARD	27.76
CANOPY	382.00
TOTAL	609.25m2
CONCRETE PAVING	1228.80
PEDESTRIAN PATH (SHOPFRONT)	62.96
TOTAL PAVING	1291.76m2
PARKING SPACES	5no.
RE FUELLING BAYS	12no.
BICYCLE SPACES	3no.
LANDSCAPING	245.38

PROPOSED SERVICE STATION

153 - 157 RAILWAY AVENUE, WERRIBEE.

REV F - FLOOR LEVEL & WALKWAY - 23.04.2021
REV E - AS CLOUDED - 13.01.2021
REV D - FOR ENDORSEMENT - 31.10.2020
REV C - FENCING NOTATION ADDED - 26.05.2020
REV B - ACCESS CROSSING EDITS - 22.04.2020
REV A - TOWN PLANNING ISSUE - 28.02.2020

SITE CONTEXT PLAN TP.01F 1:500 @A1 14.01.2021



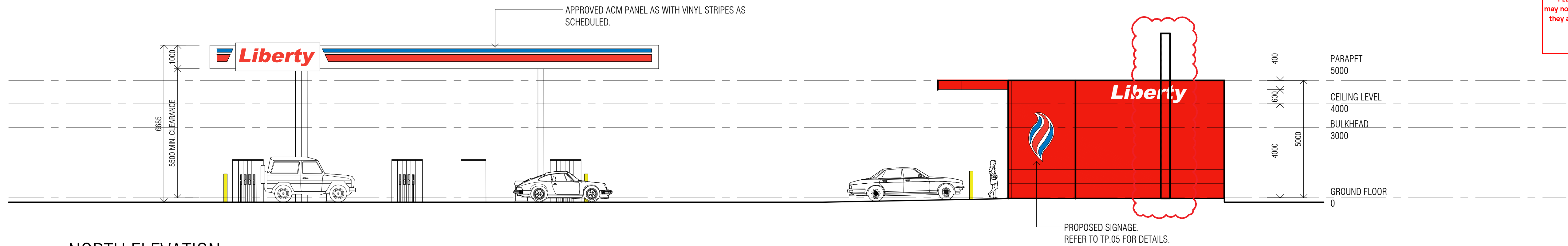
PROPOSED SERVICE STATION

153 - 157 RAILWAY AVENUE, WERRIBEE.

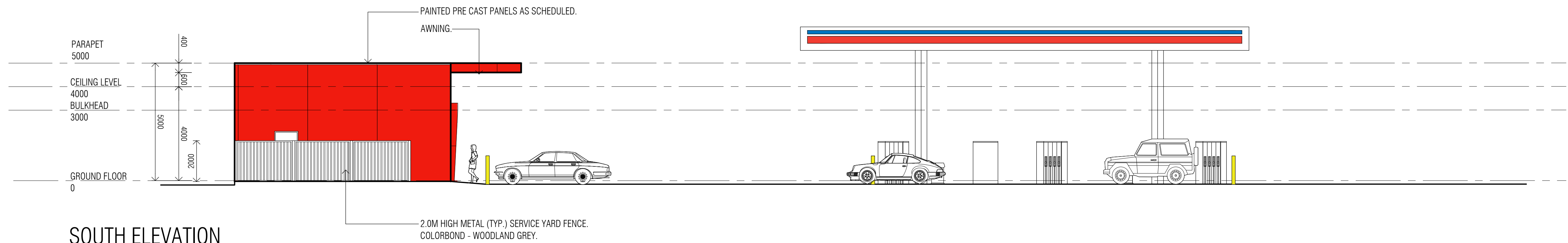
REV I - PYLON SIGN RELOCATED - 22.07.2021
REV H - FLOOR LEVEL & WALKWAY - 23.04.2021

REV G - BICYCLE SPACES UPDATED - 09.03.2021
REV F - AS CLOUDED - 13.01.2021
REV E - BINS ADDED - 16.12.2020
REV D - FOR ENDORSEMENT - 31.10.2020
REV C - FENCING NOTATION ADDED - 26.05.2020
REV B - ACCESS CROSSING EDITS - 22.04.2020
REV A - TOWN PLANNING ISSUE - 28.02.2020

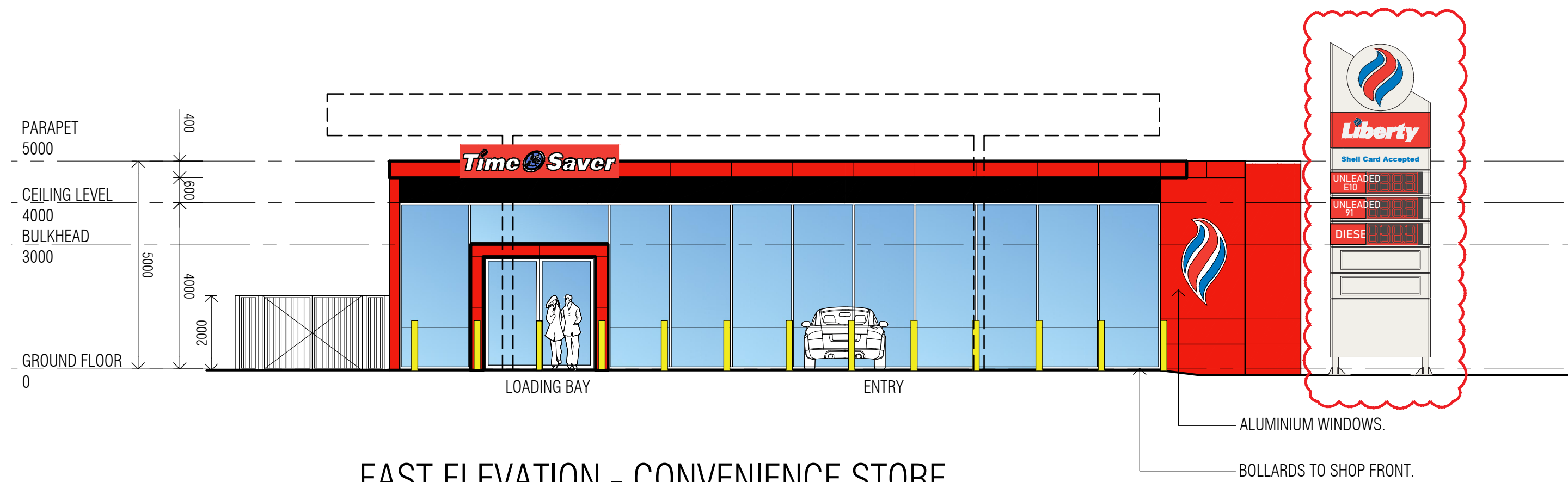
FLOOR PLAN TP.021 1:100 @A1 22.07.2021



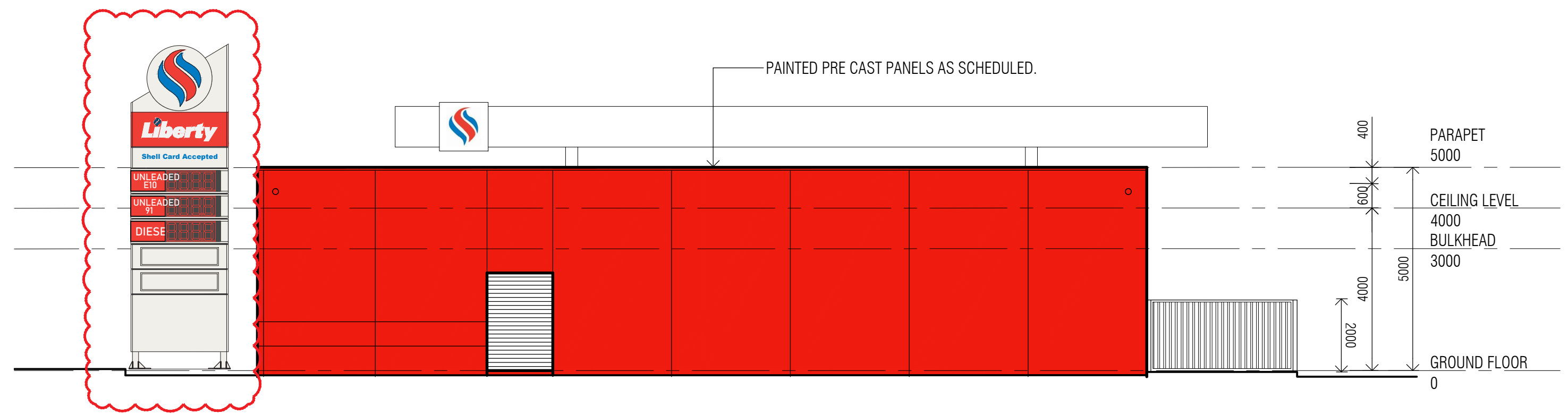
NORTH ELEVATION



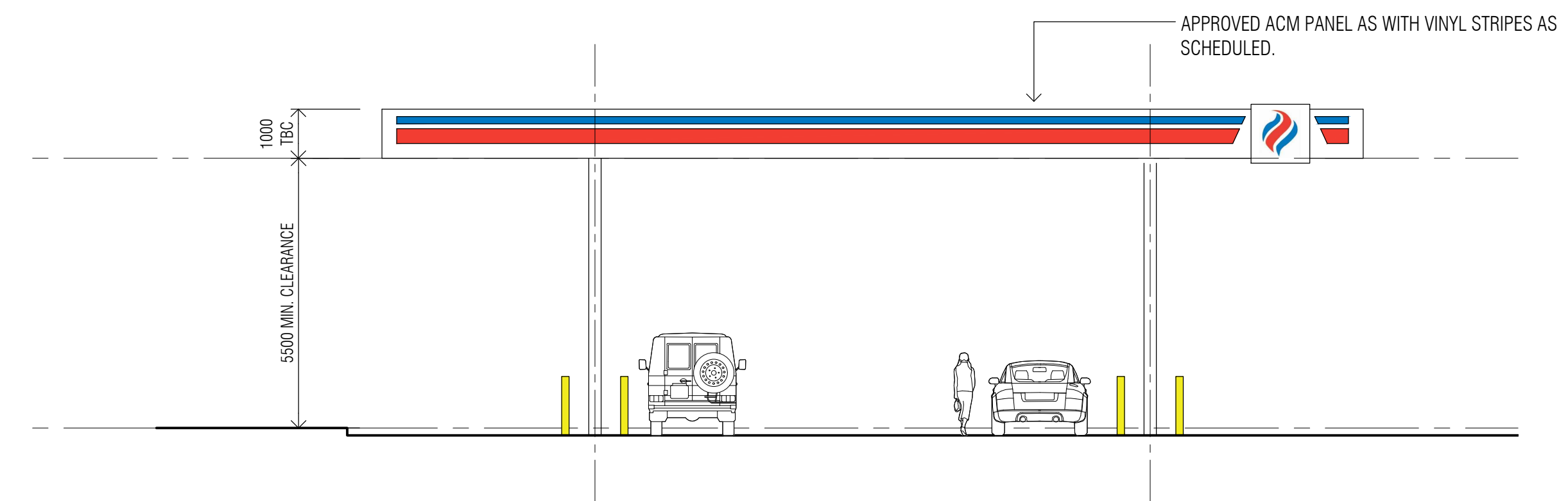
SOUTH ELEVATION



EAST ELEVATION - CONVENIENCE STORE

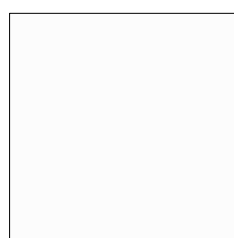

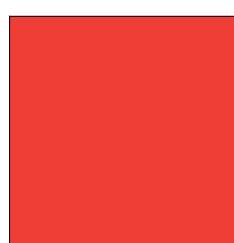
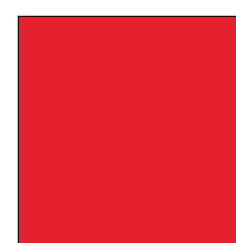


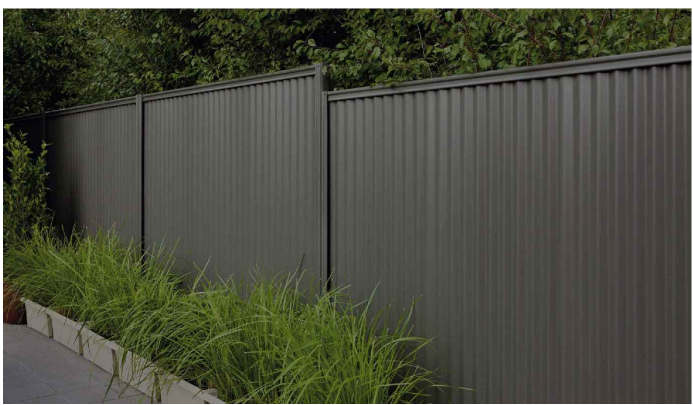
WEST ELEVATION - CONVENIENCE STORE



EAST ELEVATION - CANOPY

LIBERTY COLOUR SCHEDULE

	ACM PANEL WHITE ALUCOBOND WHITE 16		VINYL STRIPE BLUE - RGB 0, 122, 194
	VINYL STRIPE RED - RGB 239, 62, 53		FACADE PAINT FINISH DULUX TRUE RED



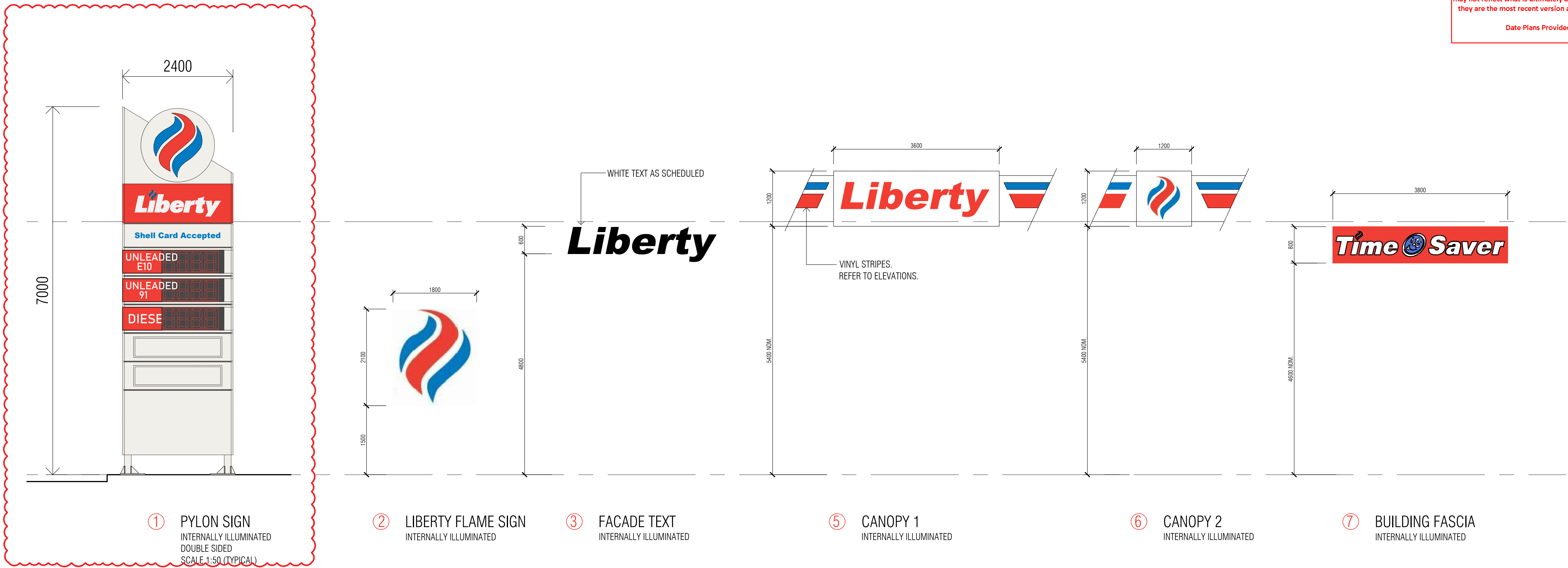
FENCE IMAGE
2.0M HIGH 'WOODLAND GREY'

PROPOSED SERVICE STATION

153 - 157 RAILWAY AVENUE, WERRIBEE.

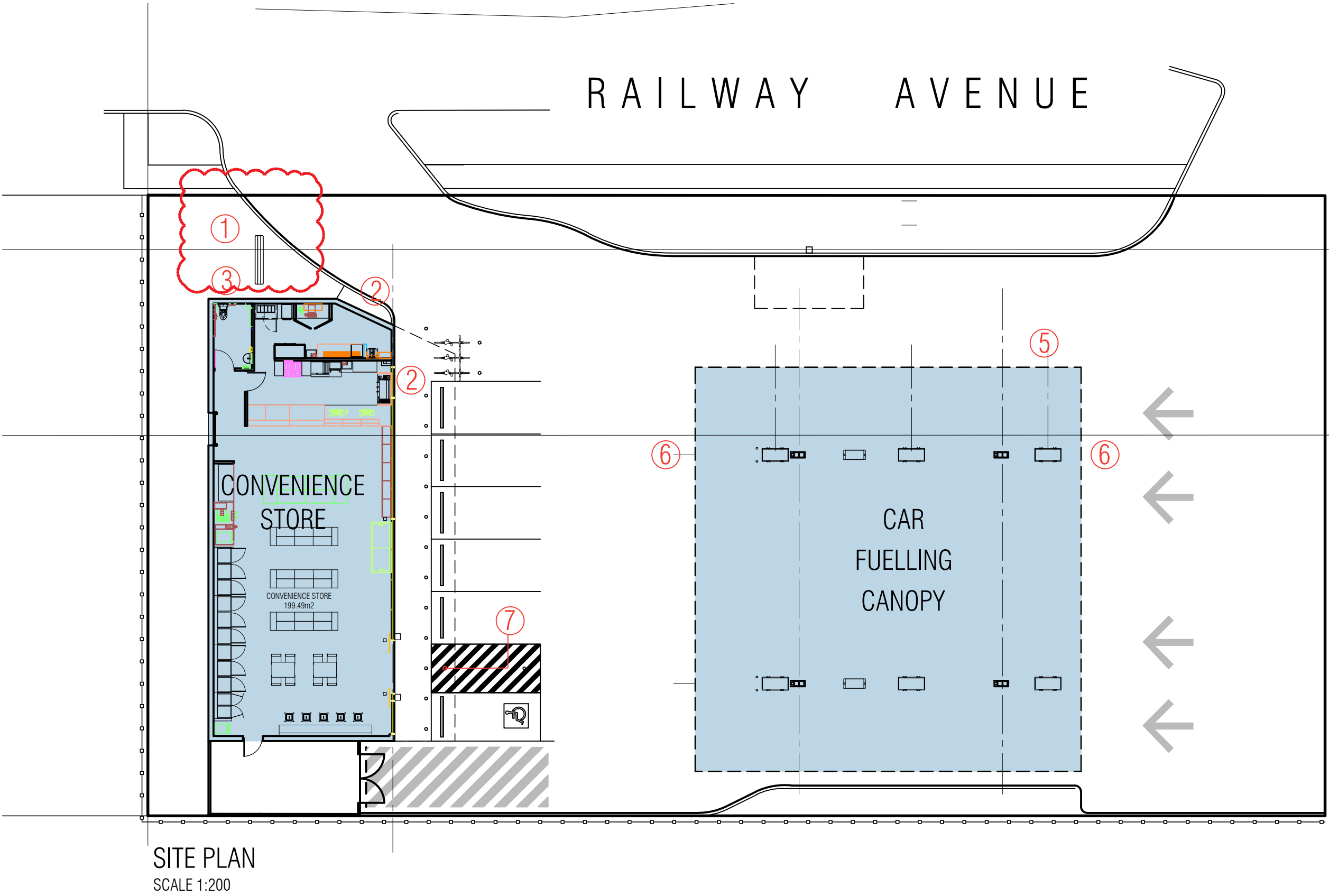
REV G - PYLON SIGN RELOCATED - 22.07.2021
REV F - AS CLOUDED - 11.06.2021
REV E - AS CLOUDED - 29.04.2021
REV D - AS CLOUDED - 13.01.2021
REV C - FENCING NOTATION ADDED - 26.05.2020
REV A - TOWN PLANNING ISSUE - 28.02.2020

ELEVATIONS TP.03G 1:100 @A1 22.07.2021



NOTE: ALL LIBERTY AND AFFILIATED BRAND SIGNAGE IS TO BE CONFIRMED AND IN ACCORD WITH RESPECTIVE BRANDS DETAILS.

④ DELETED



LIBERTY COLOUR SCHEDULE

ACM PANEL WHITE ALUCOBOND WHITE 16
VINYL STRIPE RED - RGB 239, 62, 53
VINYL STRIPE BLUE - RGB 0, 122, 194
FACADE PAINT FINISH DULUX TRUE RED

PROPOSED SERVICE STATION

153 - 157 RAILWAY AVENUE, WERRIBEE.

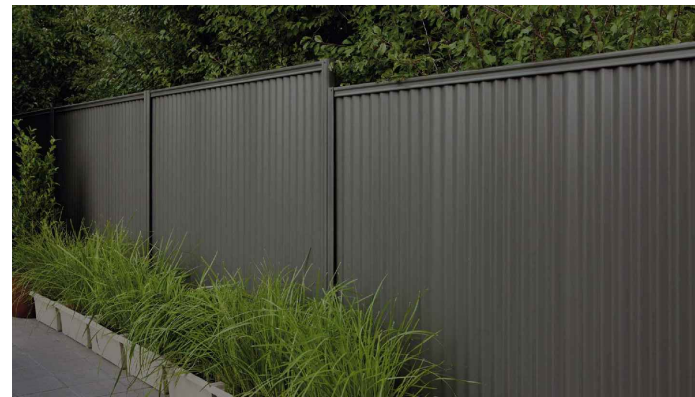
REV H - PYLON SIGN RELOCATED - 22.07.2021

REV G - PYLON SIGN UPDATED - 11.06.2021
REV F - PYLON SIGN UPDATED - 29.04.2021
REV E - FLOOR LEVEL & WALKWAY - 23.04.2021
REV D - AS CLOUDED - 13.01.2021
REV C - FOR ENDORSEMENT - 31.10.2020
REV B - ACCESS CROSSING EDITS - 22.04.2020

SIGNAGE DETAILS

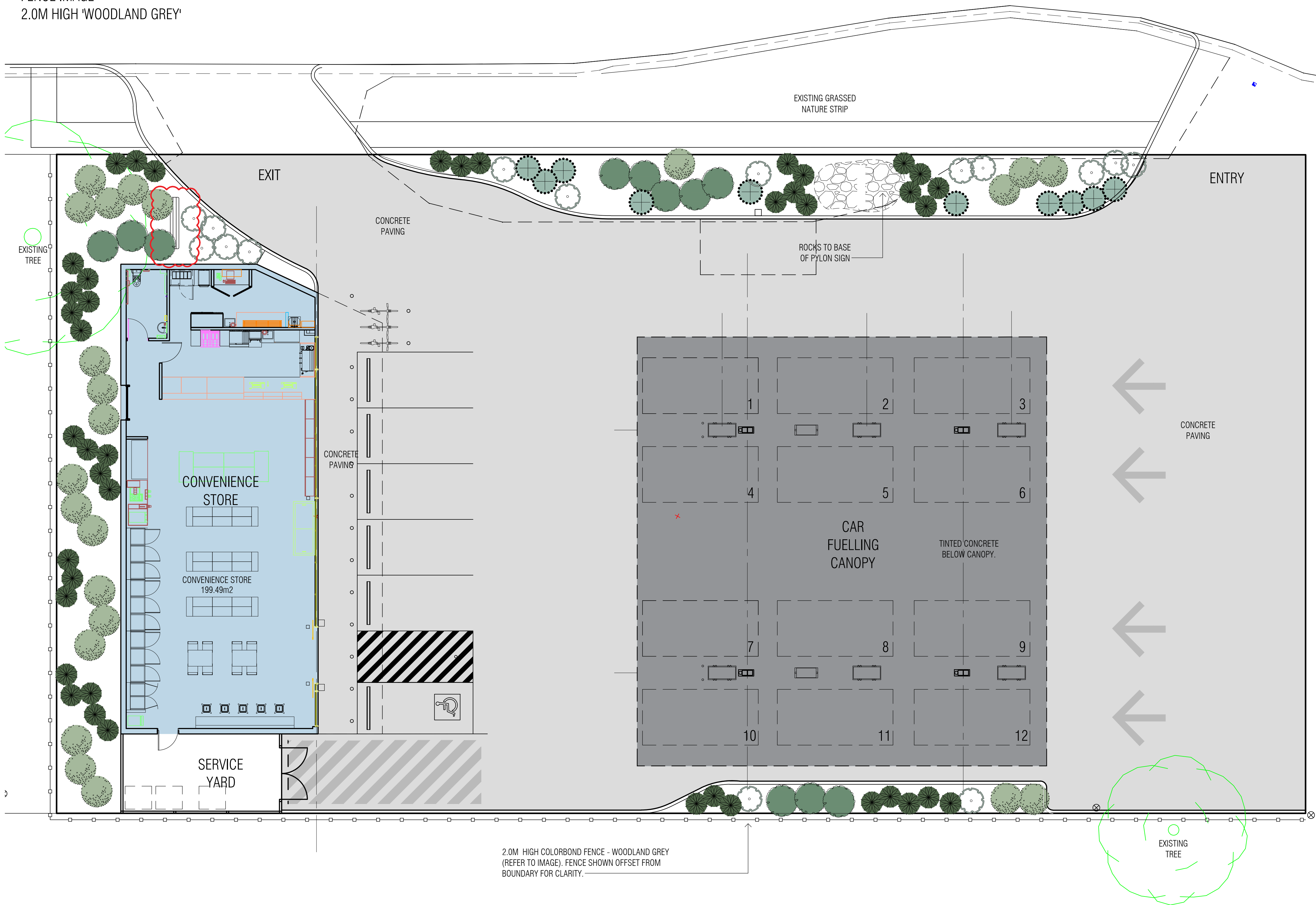
TP.05H AS @A1

22.07.2021



FENCE IMAGE
2.0M HIGH 'WOODLAND GREY'

RAILWAY AVENUE



PLANTING SCHEDULE



BANKSIA MARGINATA - 'DWARF FORM'
1.5M (h) x 1.5M (w)
POT SIZE - 150mm
QUANTITY - 14



CORREA ALBA - 'WHITE CORREA'
1.5M (h) x 1.5M (w)
POT SIZE - 150mm
QUANTITY - 24



EUTAXIA DIFFUSA - 'MALLEE BUSH PEA'
1.0 (h) x 1.0 (w)
POT SIZE - 150mm
QUANTITY - 13

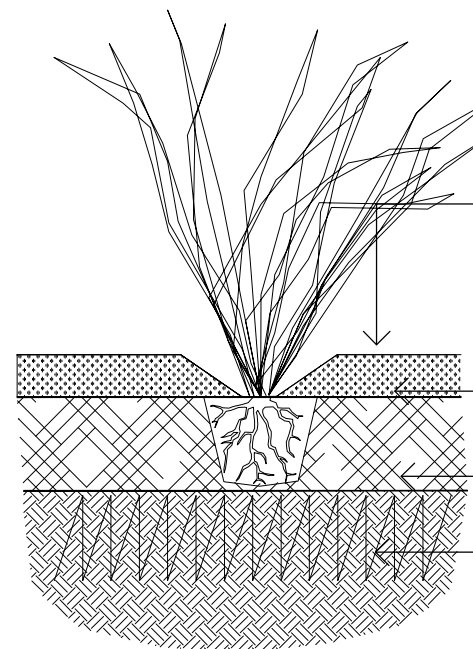


PIMELEA GLAUCA - 'SMOOTH RICE FLOWER'
1.0 (h) x 0.5M (w)
POT SIZE - 40mm TUBE
QUANTITY - 20

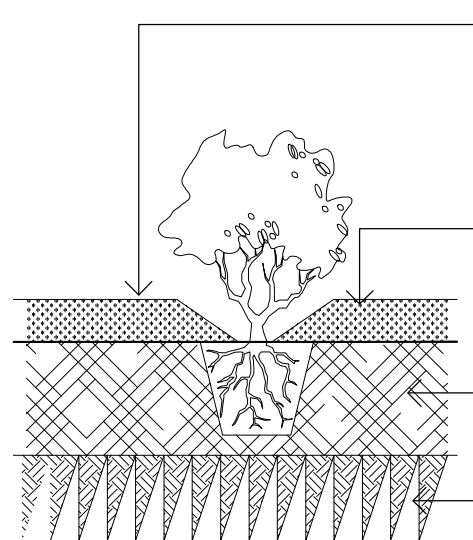


THEMEDA TRIANDRA - 'KANGAROO GRASS'
1.0M (h) x 0.3M (w)
POT SIZE - 40mm TUBE
QUANTITY - 50

- NOTES:
- ALL CHOSEN PLANTS ARE SUBJECT TO AVAILABILITY.
 - MINIMUM POT SIZE FOR EACH SPECIES AS NOTED
 - THE LANDSCAPE CONTRACTOR SHALL OBSERVE ALL LOCAL WATER AUTHORITY WATERING RESTRICTIONS. THE CONTRACTOR SHALL OBTAIN WATERING PERMITS AS REQUIRED.
 - PROVIDE APPROVED WATER RETAINING ORGANIC MULCH TO ALL EXPOSED PLANTING BEDS (MINIMUM DEPTH 75mm).
 - EXISTING TREES ADJACENT TO SITE ARE TO BE PROTECTED WITH APPROVED TEMPORARY FENCING DURING CONSTRUCTION.



GRASSES / GROUNDCOVER PLANTING
DETAIL (NTS)



SHRUB PLANTING DETAIL (NTS)

PROPOSED SERVICE STATION

153 - 157 RAILWAY AVENUE, WERRIBEE.

REV H - PYLON SIGN RELOCATED - 10.08.2021
REV G - FLOOR LEVEL & WALKWAY - 23.04.2021
REV F - BICYCLE SPACES UPDATED - 09.03.2021
REV E - AS CLOUDED - 13.01.2021
REV D - FOR ENDORSEMENT - 31.10.2020
REV C - FENCING NOTATION ADDED - 26.05.2020
REV B - ACCESS CROSSING EDITS - 22.04.2020
REV A - TOWN PLANNING ISSUE - 28.02.2020